

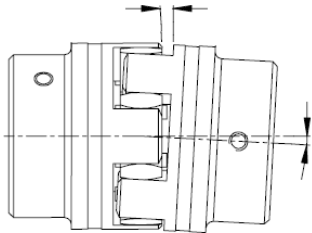
CAUTION!

CHECK YOUR NON-LISTED (NON-FIRE) KTR ROTEX® COUPLING ALIGNMENT

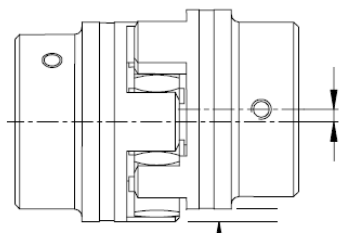
You must check the pump's flexible coupling alignment immediately and then again just before startup. While accurately aligned at the factory, this alignment may shift or twist during shipment. Misalignment will severely shorten the lifespan of your coupling insert. Please check against the maximum displacement figures shown below.

NON-LISTED (NON-FIRE) KTR ROTEX (CURVE JAW TYPE) COUPLING ALIGNMENT DATA											
PUMP OPERATING SPEED				1500 RPM		1800 RPM		3000 RPM		3600 RPM	
KTR COUPLING SIZE	HUB MAX OUTER DIAMETER	SPIDER WIDTH (INSIDE GAP)	GAP	MAX Parallel	MAX Angular	MAX Parallel	MAX Angular	MAX Parallel	MAX Angular	MAX Parallel	MAX Angular
24	2.17	0.55	0.71	0.009	0.033	0.008	0.031	0.006	0.03	0.005	0.017
28	2.64	0.59	0.79	0.01	0.04	0.009	0.039	0.007	0.033	0.006	0.026
38	3.15	0.71	0.94	0.011	0.053	0.01	0.051	0.007	0.043	0.007	0.035
42	3.74	0.79	1.02	0.012	0.07	0.011	0.067	0.008	0.055	0.007	0.047
55	4.72	0.87	1.18	0.015	0.091	0.014	0.09	0.01	0.079	0.009	0.071
65	5.31	1.02	1.38	0.016	0.11	0.015	0.102	0.011	0.091	0.01	0.087
75	6.3	1.18	1.57	0.018	0.13	0.017	0.126	0.013	0.114	0.011	0.106
90	7.87	1.34	1.77	0.019	0.17	0.018	0.161	0.013	0.15	0.013	0.138
100	8.86	1.5	1.97	0.02	0.19	0.019	0.181	0.014	0.165	ALL DIMENSIONS IN INCHES	
110	10.04	1.65	2.17	0.021	0.22	0.02	0.213	0.015	0.197		
125	11.42	1.81	2.36	0.024	0.25	0.021	0.248				

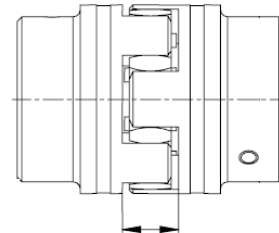
Please remember that these are maximums and must not be reached at the same time. For example, once any percentage of the MAX parallel value is reached, this percentage value must be subtracted from 100% to find out what percentage of the MAX angular value may be used (using 70% of the MAX parallel value allows you 30% of the angular value).



ANGULAR MISALIGNMENT



PARALLEL MISALIGNMENT



GAP

Check your coupling size by measuring the spider width, the maximum hub outer diameter against the values listed, or documentation enclosed with the packing list. Check parallel alignment by placing straightedge across the coupling flanges or using a dial indicator. This should be done at 4 points on the coupling, 90 degrees apart. Check angular misalignment by inserting a feeler gauge or taper gauge at these 4 points or using a dial indicator. Check for coupling GAP minimum while maintaining full engagement of the element. More complete information on proper procedures may be obtained from the factory or by consulting the Hydraulic Institute Standards.

BEFORE STARTING PUMP, MAKE A FINAL CHECK ON THE ALIGNMENT. PROPER ALIGNMENT MEANS ADDED YEARS OF SERVICE.

NON-LISTED (NON-FIRE) KTR ROTEX (CURVE JAW TYPE) COUPLING SELECTION TABLE											
H.P.	OPERATING SPEED								H.P.		
	3600	3000	1800	1500	1150	875	700	580			
1/4	ROTEX 24	ROTEX 24	ROTEX 24	ROTEX 24	ROTEX 24	ROTEX 24	ROTEX 24	ROTEX 24	ROTEX 24	1/4	
1/3										1/3	
1/2										1/2	
3/4										3/4	
1										1	
1 1/2										1 1/2	
2										2	
3										3	
5										5	
7 1/2										7 1/2	
10	ROTEX 28	ROTEX 28	ROTEX 28	ROTEX 28	ROTEX 28	ROTEX 28	ROTEX 28	10			
15								15			
20	ROTEX 38	ROTEX 38	ROTEX 38	ROTEX 38	ROTEX 38	ROTEX 38	ROTEX 38	ROTEX 38	20		
25						ROTEX 42			ROTEX 42	25	
30						ROTEX 42			ROTEX 42	30	
40						ROTEX 55			ROTEX 55	40	
50			ROTEX 42	ROTEX 42	ROTEX 42	ROTEX 42	ROTEX 55	ROTEX 55	ROTEX 65	ROTEX 65	50
60											60
75			ROTEX 55	ROTEX 55	ROTEX 55	ROTEX 55	ROTEX 65	ROTEX 65	ROTEX 75	ROTEX 75	75
100											100
125			ROTEX 42	ROTEX 42	ROTEX 55	ROTEX 55	ROTEX 65	ROTEX 65	ROTEX 75	ROTEX 75	125
150											150
200	ROTEX 55	ROTEX 55	ROTEX 75	ROTEX 75	ROTEX 75	ROTEX 75	ROTEX 90	ROTEX 90	200		
250									250		
300	ROTEX 65	ROTEX 65	ROTEX 75	ROTEX 75	ROTEX 90	ROTEX 90	ROTEX 100	ROTEX 100	300		
350									350		
400	ROTEX 75	ROTEX 75	ROTEX 90	ROTEX 90	ROTEX 90	ROTEX 100	ROTEX 100	ROTEX 110	ROTEX 110	400	
450										450	
500										500	
600										600	
700	ROTEX 90	ROTEX 90	ROTEX 100	ROTEX 100	ROTEX 110	ROTEX 125	ROTEX 125	ROTEX 140	ROTEX 140	700	
800										800	

SIZE	ROTEX 24	ROTEX 28	ROTEX 38	ROTEX 42	ROTEX 55	ROTEX 65	ROTEX 75	ROTEX 90	ROTEX 100	ROTEX 110	ROTEX 125
MAXIMUM BORE	1 1/8	1 1/2	1 3/4	2 1/8	2 3/4	2 1/2	3 3/4	3 1/2	4 1/2	4 7/8	5 5/8
DIAMETER INCHES (mm)	(28)	(38)	(45)	(55)	(70)	(65)	(95)	(90)	(115)	(125)	(145)

- NOTES:**
- 1) SHAFT BORE SIZE MAY REQUIRE USING LARGER COUPLING SIZE THAN LISTED. AFTER SELECTING COUPLING, CHECK MAXIMUM BORE DIAMETER REQUIREMENTS FOR PUMP AND DRIVER. REFER TO MOTOR SHAFT DIMENSIONS BY FRAME SIZE IN SECTION 1005 PAGE 354). IF REQUIRED, MOVE TO THE RIGHT UNTIL THE SHAFT SIZES FIT WITHIN THE LIMITS OF THE COUPLING.
 - 2) COUPLING SIZES ROTEX 24 THRU ROTEX 55 ARE SIZED USING INSERT SPIDER DUROMETER OF 98 SHORE A. COUPLING SIZES ROTEX 65 THRU ROTEX 90 ARE SIZED USING INSERT SPIDER DUROMETER OF 95 SHORE A. COUPLING SIZES ROTEX 100 THRU ROTEX 160 ARE SIZED USING INSERT SPIDER DUROMETER OF 64 SHORE D. INSERT SPIDER MATERIAL TO BE URETHANE.
 - 3) ROTEX IS A REGISTERED TRADE MARK OF KTR CORPORATION.
 - 4) OPERATING AND ASSEMBLY INSTRUCTIONS ARE AVAILABLE AT WWW.KTRCORP.COM.

CAUTION!

CHECK YOUR UL LISTED (FIRE APPLICATION) KTR ROTEX® COUPLING ALIGNMENT

You must check the pump's flexible coupling alignment immediately and then again just before startup. While accurately aligned at the factory, this alignment may shift or twist during shipment. Misalignment will severely shorten the lifespan of your coupling insert. Please check against the maximum displacement values shown below.

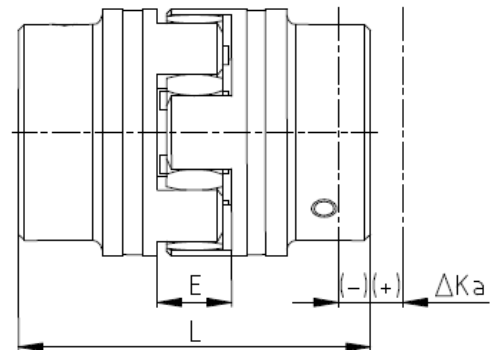
Check your coupling size by measuring the spider width, maximum hub outer diameter against the values listed, documentation enclosed with the packing list.

Check alignment by using the appropriate tool; laser, dial indicator, caliper, straight edge or feeler gage. This should be done at 4 points on the coupling, 90 degrees apart.

For normal wear limits and replacement part numbers to the spider element, please see the Maintenance Requirements section of this document below.

Additional Operating and assembly instructions are available at www.ktrcorp.com.

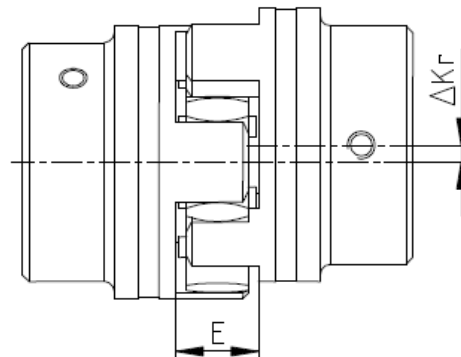
ROTEX is a registered trade mark of KTR Corporation.



the
or

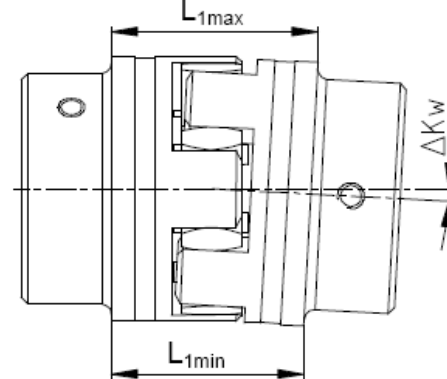
axial misalignments

$$L_{\max} = L + \Delta K_a$$



specific

parallel misalignments



angular misalignments

$$\Delta K_w = L_{1\max} - L_{1\min}$$

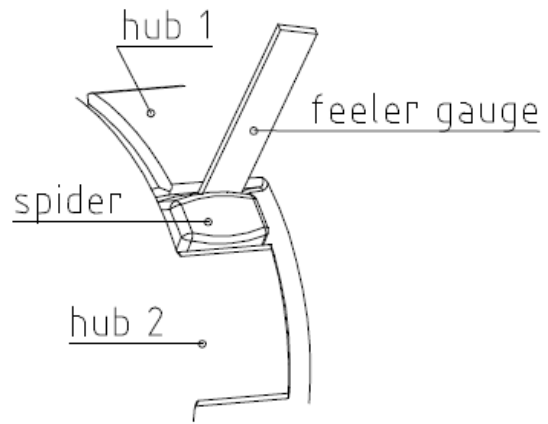
UL LISTED (FIRE APPLICATION) KTR ROTEX COUPLING ALIGNMENT DATA							
<i>UL LISTED KTR COUPLING SIZE</i>	<i>MAX SPEED</i>	<i>L DIMENSION</i>	<i>E DIMENSION</i>	<i>HUB MAX OUTER DIAMETER</i>	<i>MIN / MAX Axial (Ka)</i>	<i>MAX Parallel (Kr)</i>	<i>MAX Angular (Kw)</i>
42	3600	4.96	1.02	3.74	-0.04 / 0.04	0.004	0.024
55	3600	6.3	1.18	4.72	-0.04 / 0.05	0.005	0.035
65	3600	7.28	1.38	5.31	-0.04 / 0.05	0.005	0.043
75	1800	8.27	1.57	6.3	-0.06 / 0.06	0.008	0.063
90	1800	9.65	1.77	7.87	-0.04 / 0.08	0.009	0.081

ALL DIMENSIONS IN INCHES

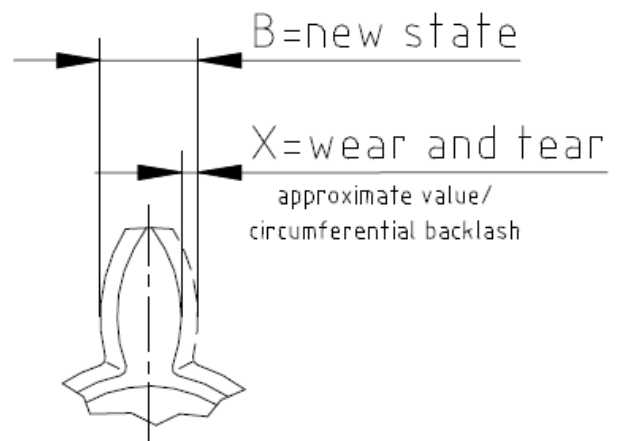
UL LISTED (FIRE APPLICATION) KTR ROTEX COUPLING MAINTENANCE REQUIREMENTS

You must check the pump's flexible coupling spider element at regular intervals for normal wear and tear. Normal wear and tear found during inspection is dependent on the actual operating conditions. Please check against the maximum wear figures shown below.

IF WEAR VALUES LARGER THEN THOSE LISTED BELOW ARE FOUND DURING INSPECTION THE SPIDER SHOULD BE REPLACED.



<i>UL LISTED KTR COUPLING SIZE</i>	<i>Wear Limit X_{max} [inches]</i>	<i>Spider Replacement Part Number</i>
42	0.004	4481062650
55	0.005	4481063650
65	0.005	4481064650
75	0.008	4481065650
90	0.009	4481066650



UL-LISTED (FIRE APPLICATION) KTR ROTEX (CURVE JAW TYPE) COUPLING SELECTION TABLE							
H.P.	OPERATING SPEED				H.P.		
	3500	2900	1750	1450			
1/4	ROTEX 42	ROTEX 42	ROTEX 42	ROTEX 42	1/4		
1/3					1/3		
1/2					1/2		
3/4					3/4		
1					1		
1 1/2					1 1/2		
2					2		
3					3		
5					5		
7 1/2					7 1/2		
10					10		
15					15		
20					20		
25					25		
30					30		
40					ROTEX 55	ROTEX 55	40
50					ROTEX 65	ROTEX 65	50
60	60						
75	ROTEX 55	ROTEX 65	75				
100	ROTEX 55	ROTEX 75	100				
125	ROTEX 65		125				
150	C1060T	ROTEX 90	150				
200			200				
250	C1080T	C1080T	250				
300			300				
350	N/A	N/A	N/A	350			
400				400			
450				450			
500				500			
600				600			
700				700			
800				800			

SIZE	ROTEX 42	ROTEX 55	ROTEX 65	ROTEX 75	ROTEX 90	C1060T	C1080T
MAXIMUM BORE DIAMETER INCHES (mm)	2.125 (52)	2.813 (70)	3.000 (75)	3.625 (92)	4.250 (105)	2.375 (60)	3.375 (85)

NOTES:

- 1) SHAFT BORE SIZE MAY REQUIRE USING LARGER COUPLING SIZE THAN LISTED. AFTER SELECTING COUPLING, CHECK MAXIMUM BORE DIAMETER REQUIREMENTS FOR PUMP AND DRIVER (REFER TO MOTOR SHAFT DIMENSIONS BY FRAME SIZE IN SECTION 1005 PAGE 354). IF REQUIRED, MOVE TO THE RIGHT UNTIL THE SHAFT SIZES FIT WITHIN THE LIMITS OF THE COUPLING. SIZE C1080T MAXIMUM LISTED SPEED IS 1800 RPM.
- 2) ROTEX IS A REGISTERED TRADE MARK OF KTR CORPORATION.
- 3) C1060T AND C1080T SIZES ARE REGISTERED TRADE MARKS OF CLARKE CORPORATION.
- 4) COUPLING SELECTIONS ARE FOR UL LISTED COUPLINGS.
- 5) COUPLINGS CANNOT BE USED WITH DIESEL ENGINES.
- 6) 1.15 SERVICE FACTOR FOR ELECTRIC MOTOR DRIVEN CENTRIFUGAL PUMPS ONLY.